



Ref. MIRPLUS 4060-RB

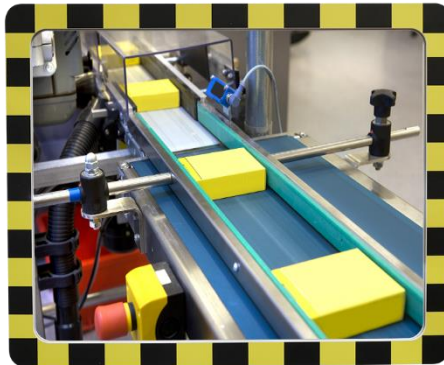
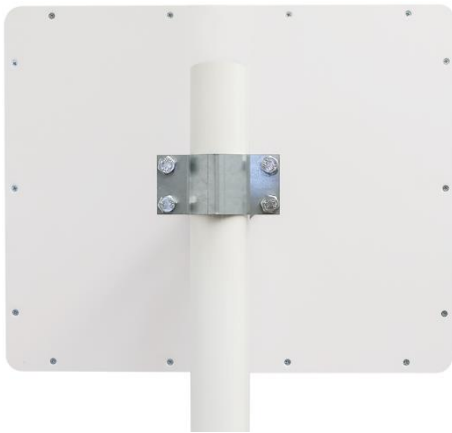
Ref. MIRPLUS 4060-NJ



## APPLICATIONS

For manufacturing workshops and industrial premises.  
For inspection of machines, control points, etc.  
Control of transfer belts and hidden parts of machines.

## PRECISION CONTROL FLAT MIRROR FOR CONTROL AND MONITORING IN THE INDUSTRY



## MIRROR

**FRAME AND BACK**

In rigid PVC expanded in 10mm.

**REFLECTOR**

POLY+ unbreakable, very resistant, non-deformable  
6 years warranty

Frame dimensions: 450 x 650 mm

Reflector dimensions: 400 x 600 mm

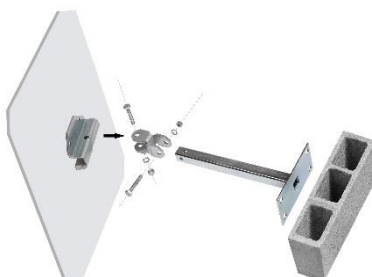


## FIXATION

**FIXATION**

Included with the mirror. It can be mounted on any pole with a cross section of 60 to 90 mm.

**wall mounting**



**Pole Mounting**

